

## FlowView Platform

*With the array of today's business applications traversing IP networks, companies need a way to easily manage their networks and monitor their service providers. The first steps in managing this complexity are to have clear visibility into the network and the ability to accurately measure performance. Through the Internap® FlowView Platform (FVP) solution, companies can now have total visibility. By extending the capability of our award-winning Flow Control Platform™ solution, Internap enables you to reap the benefits of seeing what is happening inside your network with an easy-to-use graphical interface.*

The Internap FlowView Platform (FVP) solution examines your IP traffic and provides you with an unprecedented view of what is happening in real-time. Single- or multi-homed, this network visibility appliance scrutinizes all of your ISP links.

### **A Platform that Assures Business Performance**

The FVP solution uses proprietary monitoring technologies to continuously measure actual traffic performance to destination networks, as well as measure traffic performance to networks across each of your ISPs if you are multi-homed. This allows you to receive detailed network performance to analyze traffic patterns of your customers, suppliers and employees.

### **A Powerful Set of Features to Measure Your SLA with Your Carrier**

The combination of performance metrics, including latency and packet loss, the marginal cost on link and the SLA for your carrier(s), will allow the FVP solution to show if your carriers are meeting their promises to you, and how your network is performing for your users.

### **Robust and Flexible Reporting**

Real-time, customizable reports display provider-specific bandwidth usage, historical logs of traffic patterns and application usage. Alert functions allow the network administration team to spot pre-defined metrics such as when IM traffic is over a certain threshold. Other powerful reports include bandwidth usage and cost by transit provider.

### **The Scalability to Handle Your Enterprise Environment**

The Internap FVP solution manages traffic flows from many of the largest content provider sites and enterprise networks to remote branch offices and small-to-medium sized sites. No matter what type of environment you have, this offering enables you to keep your existing Internet access architecture and integrates seamlessly with your existing firewalls and load balancers.

### **Features**

- Enhanced traffic reporting capabilities
- Real-time view into network activity and application traffic
- Powerful custom performance and usage/cost reporting
- Simplified implementation and operation in either single- or multi-homed networks

### **Benefits**

- Increase visibility of ISP performance and bandwidth usage, giving you the information needed to effectively manage your providers and negotiate future bandwidth agreements
- Analyze traffic patterns of your customers, suppliers and employees, creating efficiencies
- Integrate seamlessly with your existing firewalls and load balancers

877.THE.PNAP (877.843.7627)  
internap.com



The FVP solution provides unique visibility into your IP network so you can better manage its performance. Deployed at your network's edge, this solution allows you to understand overall network performance at the macro-level as well as identify specific problems at the micro-level. Additionally, it provides intelligent reporting to assist in network maintenance, troubleshooting and service provider management.

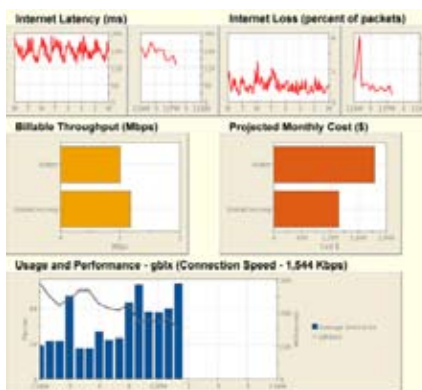
Using its own local database, performance and ISP usage statistics generated by the FVP solution provide you with network statistics for the past 30 days or longer. The information is kept for historical reporting and is customizable for different time periods. All reports are accessible via a secure web interface using a standard web browser or via email-based profiles. These individual reports can be tailored to a broad spectrum of personnel, from executives to network engineers, including a convenient dashboard of key indicators for ongoing network monitoring.

**Key Features of the Internap FlowView Platform Solution**  
**Accurate Performance Measurement**

- Application-independent operation for flow identification and performance measurement
- Real-time end-to-end performance measurement of actual traffic across single or multiple networks
- Measurement from the traffic source for a customer-specific view of performance to key Internet destinations
- Automated or manual operational modes for identification of destination networks
- Enhanced passive flow analysis for improved performance and scalability
- Real-time view of application traffic and historical view of which applications are being used and when

**Powerful Performance and Usage/Cost Reporting**

- Complete web-based, email and live reporting; offering real-time traffic analysis using granular filtering options
- Secure environment with robust authentication and access control
- Flexible reporting options with customizable time intervals, detail levels, viewing/data export options, choice of performance metric and destination networks



**FVP 120 Specifications**

- Capacity  
Up to 100 Mbps of Bandwidth
- Rack Space  
Requirement 1U
- Dimensions (H x W x D)  
1.6 x 18 x 12 in; or  
4 x 48 x 31 cm
- Weight  
20 lbs/9 kg
- Power Requirements  
110V/240V  
50 – 60 Hz  
6A max @ 115V  
3A max @ 230V
- Storage  
IDE HDD, 9 GB
- Passive Traffic Analysis  
Standard: 4 Ethernet  
(10Base-T/100Base-TX)
- Temperature  
0°C to 50°C, 32°F to 122°F
- Relative Humidity  
5 to 95%, Non-condensing
- Safety  
UL 1950, CE
- EMI  
FCC Class A,  
EN55022 Class A

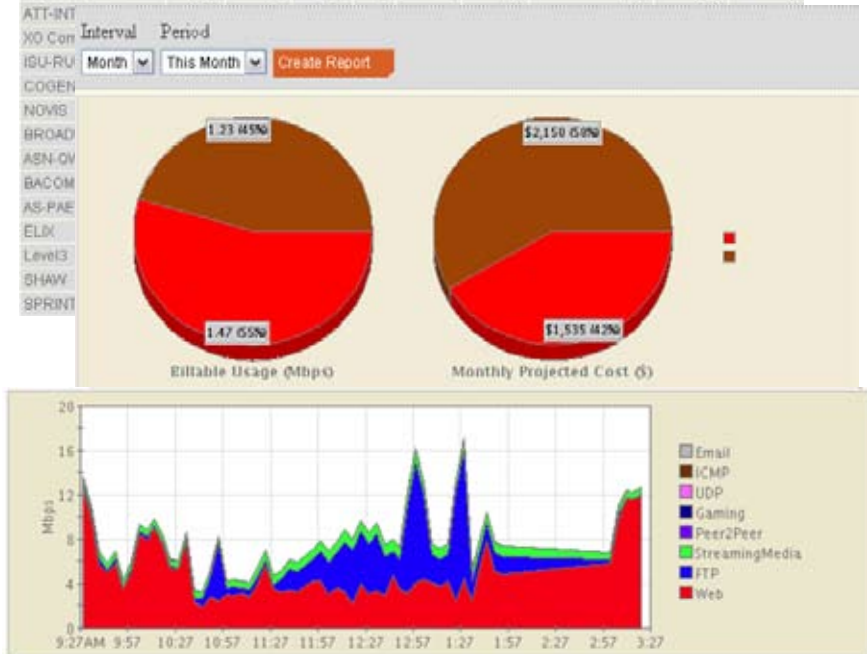


**Powerful Performance and Usage/Cost Reporting (cont'd.)**

- Extensive set of both network and executive management reports including:
  - “Dashboard” of key performance measurements, carrier usage/cost and all network activity indicators over the past hour
  - Trend analyzer indicating monthly cost and billable throughput
  - Real-time flow statistics (host or prefix-specific bit-rate, total bit-rate, packets per second, dropped packets, protocol accounting and sessions)
  - Internet performance report showing overall current and historical network performance, projected usage costs for the month, and frequently used autonomous systems (AS)
  - Destination AS volume report that graphically displays how the Internet is performing in relation to top traffic volume AS and the distance each AS is from your network in AS hops

AS Top 20 By Volume Out Descending - Apr 18 1:10 PM CDT to Apr 18 3:10 PM CDT

AS Name	ASN	Prefix (count)	Flows (count)	Volume (MB)		Latency (ms)	Retransmissions (%)	Throughput (Kbps)	
				Out	In			Out	In
Unknown	0	7096	32682	739	80	162	1.51	1391	194
ALTERNET-AS	701	290	54585	156	1123	27	1.2	363	2322
VERIO	2914	88	332	42	22	63	0.05	338	36
Deutsche Tel.	3320	168	876	40	2	238	0.65	301	7
ADN-AMRO-2	22733	3	25	39	0.0251	39	1	650	13
RACKSPACE	27357	52	431	35	13	43	0	378	44
AOL-ATDN	1668	154	1012	22	2	199	1.02	246	6



**Powerful and Detailed Reporting on Key Network Statistics**

- Top destination prefixes
- Destination performance
- Bandwidth usage/cost
- Traffic delivery performance
- Tracking real-time carrier route changes through to destinations
- Performance/usage statistics
- Historical data on network performance

**Seamless Integration**

- **Easy installation** with existing network infrastructure environment (including firewalls and load balancers)
- **Transparent operation** with no additional hardware in the data path and no extra monitoring (all accessible via a browser)
- **Self-contained footprint** with no reliance on external data sources or requirement for modification of existing applications

