

## Software Components

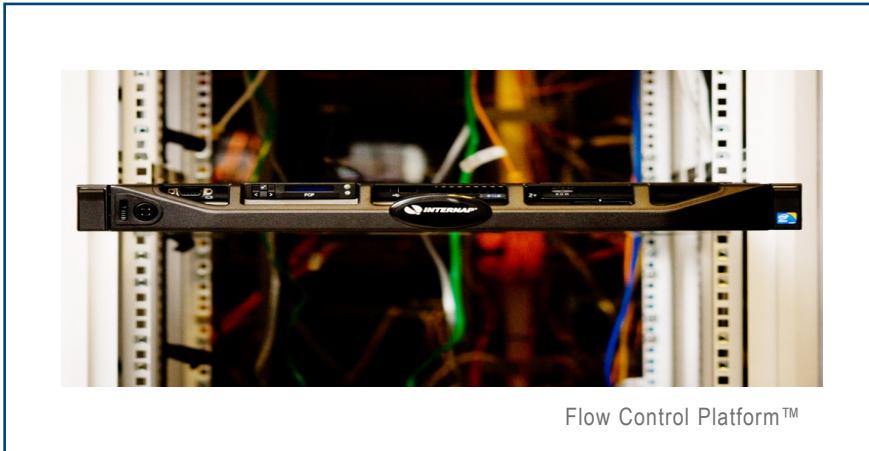
The Internap Flow Control Platform (FCP), an intelligent route optimization appliance, takes your multi-homed environment to the next level by continually monitoring your network for latency, packet loss, route stability and congestion. Our solution automatically reroutes traffic to guarantee performance levels for your critical applications. The result - easier troubleshooting, improved network performance and intelligent traffic management across multiple provider links.

SPECIFICATION	MODEL FCP-GigE / FCR-GigE	MODEL FCP-10GigE / FCR-10GigE
Rack Space Requirement	1U	1U
Dimensions (H x W x D)	43.0 x 434.0 x 627.1 (mm) (without ear, without bezel) 1.69 x 17.09 x 24.69 (in)	43.0 x 434.0 x 627.1 (mm) (without ear, without bezel) 1.69 x 17.09 x 24.69 (in)
Processor	Dual Quad-core Intel® Xeon® Processor X5560 (8M Cache, 2.80 GHz, HT, 6.40 GT/s Intel® QPI)	Dual Quad-core Intel® Xeon® Processor X5560 (8M Cache, 2.80 GHz, HT, 6.40 GT/s Intel® QPI)
Memory	6GB 1333MHz	6GB 1333MHz
Weight	Max: 35.02lbs (15.9Kg)	Max: 35.02lbs (15.9Kg)
Power Requirements	Auto Ranging (100V~240V)	Auto Ranging (100V~240V)
Hot Swappable Components	Hot Pluggable Hard Drive	Hot Pluggable Hard Drive
Storage	RAID 1 2 x 250GB 7200 RPM Hot Pluggable Drive	RAID 1 2 x 250GB 7200 RPM Hot Pluggable Drive
Power Supply	Redundant power supplies (500W)	Redundant power supplies (500W)
<b>Interface Options</b>		
Management	Gigabit Ethernet RJ45 (10/100/1000 Base-T), DB-9 (RS-232)	Gigabit Ethernet RJ45 (10/100/1000 Base-T), DB-9 (RS-232)
Carrier Link Monitoring, BGP Route Updates, SNMP Polling, WAN	Gigabit Ethernet RJ45 (10/100/1000 Base-T)	Gigabit Ethernet RJ45 (10/100/1000 Base-T)
Passive Traffic Analysis	4 x Gig E (10/100/1000Base-T) RJ45, or LC - Fiber Multi Mode or Single Mode	2 x 10GigE LC - Fiber Multi Mode or Single Mode
<b>ENVIRONMENTAL REQUIREMENTS</b>		
Temperature (For Altitude ≤900 m or 2952.75 ft)	10 to 35 °C (50 to 95 °F)	10 to 35 °C (50 to 95 °F)
Humidity Percent Ranges	20 to 80 % (Max Wet bulb temperature= 29 °C)	20 to 80 % (Max Wet bulb temperature= 29 °C)
	Non-condensing	Non-condensing
<b>REGULATORY APPROVALS</b>		
Safety	CE	CE
EMI	FCC Class A	FCC Class A

Contact us to learn how Internap can solve your IT challenges by enabling you to focus on your core business, improve service levels and lower the cost of IT operations.

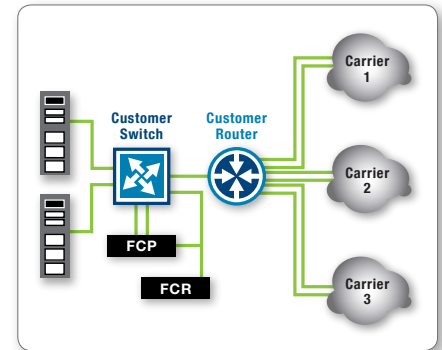
877.843.7627 | [contactsales@internap.com](mailto:contactsales@internap.com) | [www.internap.com](http://www.internap.com)

## FCP Box



Flow Control Platform™

## FCP Network Configurations



## FCP Model Transition

Use the table below to determine which products are planned for End-of-Life (EOL) and their replacements:

NEW MODEL	REPLACES THE FOLLOWING MODELS (EOL):
FCP-GigE and Lic-FCP-XGigE	FCP 5200 FCP 500 FCP 120
FCP-10GigE and Lic-FCP-XXGigE	FCP-10Gx FCP-10G
FCR-GigE and Lic-FCR-XGigE	FCR 85
FCR-10GigE and Lic-FCR-XXGigE	FCR 10G
<i>FC-10G Blade, FC5200 Blade and FVP are no longer available.</i>	

## Why Internap?

Transform your IT infrastructure into a competitive advantage with IT IQ from Internap, intelligent IT Infrastructure solutions that deliver unparalleled performance, availability and support. Since 1996, thousands of enterprises have entrusted Internap to deliver their online applications across our platform of connectivity, colocation, managed hosting and cloud services.

For more information, visit [www.internap.com](http://www.internap.com).